

SI Health IT Benchmarking

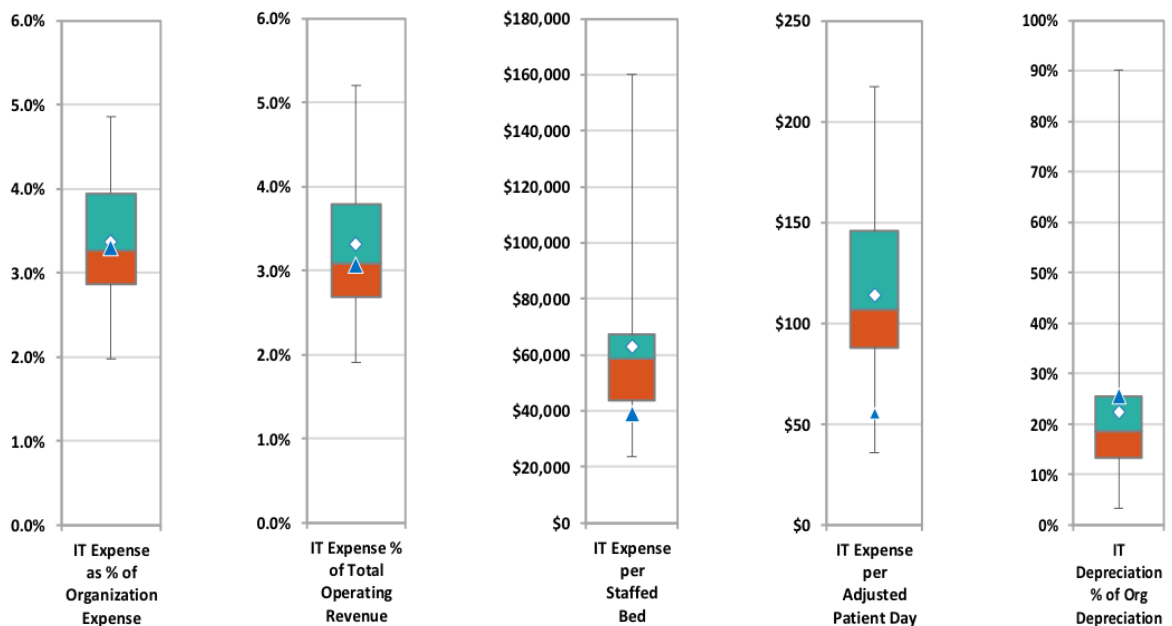
Creating a benchmark or standard against which to compare your health system's information technology investments is a critical step in an increasingly cost sensitive environment. By enabling organizations to compare their IT costs against similar organizations or across hospitals within the enterprise, IT benchmarking provides a critical reference point for IT investment and strategic planning decisions among senior executives and boards of trustees.

For more information or to get started, go to <https://scottsdaleinstitute.org/it-benchmarking/>

Key Points

- Healthcare specific, anonymous IT benchmarking
- Adjusts for functional variations
- Automated one-on-one comparisons with self-selected organizations
- One-on-one support throughout the process
- Currently more than 80 participating organizations, with 900+ hospitals and 13,000+ ambulatory facilities
- Opportunity to participate in the SI organization chart library and talk with other participants
- MS Excel based for flexibility

SAMPLE BOARD REPORT



Also includes additional charts for: IT FTEs as % of Organization FTEs, Users supported by each IT FTE, IT Cost per User, Cybersecurity as % of IT Operating Expense and Vendor Support Fees as % IT Operating Expense.

"It has been difficult for us to find good benchmarking data with significant relevance. Scottsdale Institute is the first source we have found that brings in a significant number of similar sized organizations and the flexibility to manage your comparative group. The normalization tools they have employed in the tool are very helpful. We have used this in helping the Executive team understand how we align with our peers. Thank you for providing this."

Tim Thompson, Sr. VP and CIO, BayCare Health System

The SI Health IT Benchmarking Program was originated by Spectrum Health and contains data and related materials that are proprietary and confidential to the Scottsdale Institute, and may not be used without SI's written permission.